

interstuhl

Champ







Second and third generation managing directors: Helmut, Werner and Joachim Link (left to right)

#### Interstuhl

The idea of a Swabian businessman and developer is embarking on an international journey. It's all about attractive and healthy seating, whether we use it to work, think, discuss, argue or relax.

It's all about a chair that actively supports us at what we are doing.

Interstuhl innovations are conceived, tested and developed in an interesting mix of think-tank and expert laboratory. That is what makes us so unique. Simply stated by Werner Link, the company's owner and Managing Director: "We understand more about sitting". An honest statement that has its origins back in 1961 when the assignment was to create relaxing seating for the workers of a textile factory. The focus ever since has been on expertise and

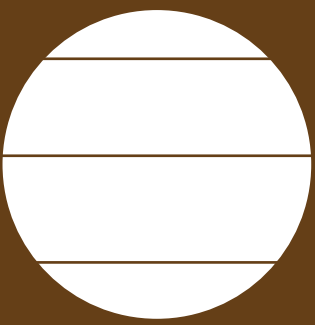
a genuine interest in our products and the people who use them. We remain true to the spirit of our brand by collaborating with leading institutes on the scientific development of our products. This has resulted in a collection that is unparalleled in its breadth and depth. He who understands more about sitting, has studied it in detail. Interstuhl is such a company and will remain so: a world away from corporate affiliations and concerns about globalization. Over 600 employees craft exclusive German goods and they do so in Germany.

Anyone who understands more about sitting should rise up. Rise above the tired old clichés about quality and materials. Interstuhl is what it is, and what it is is very good.



1C62

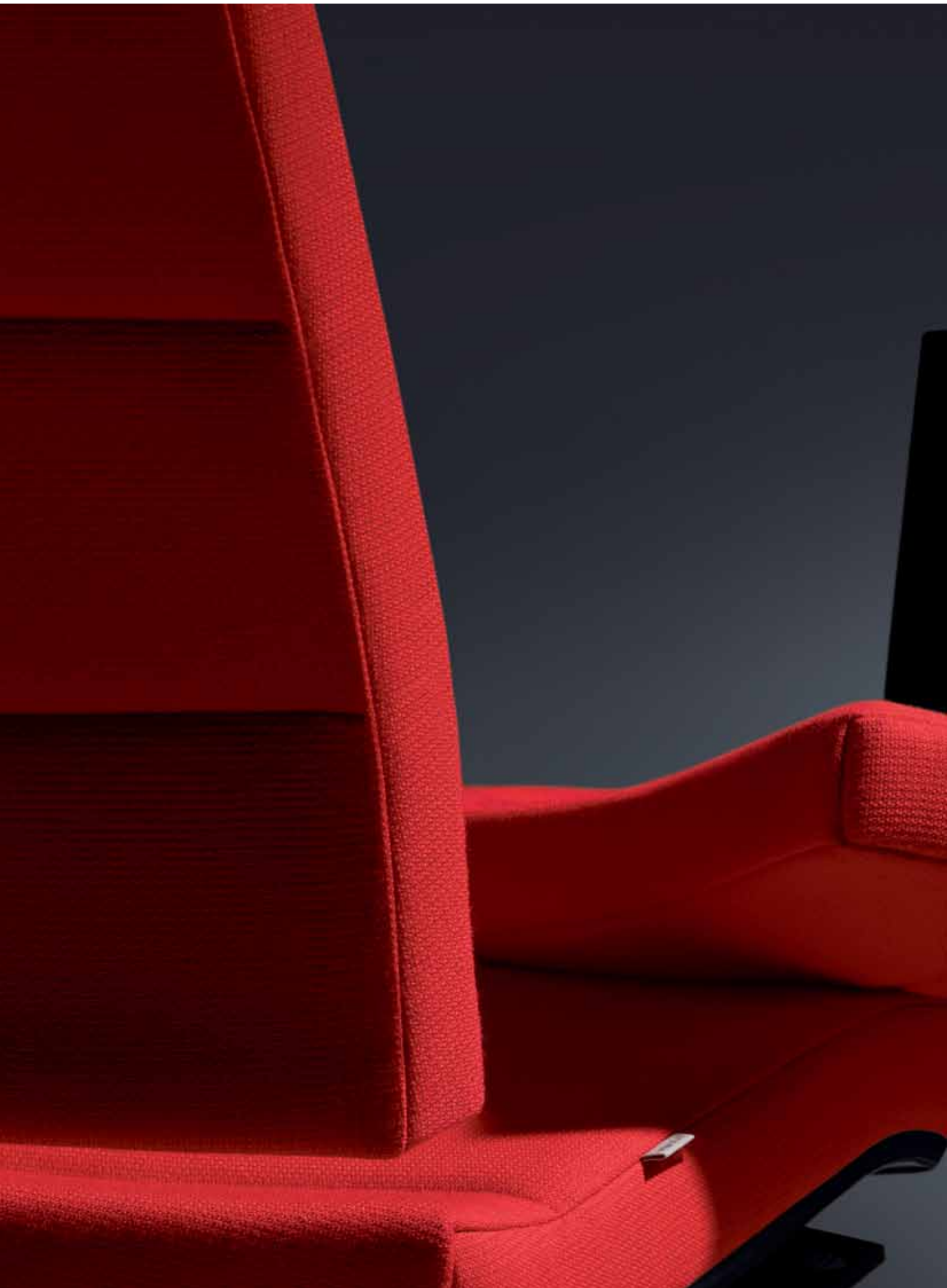
Champ. The elegant design, the segmented upholstery, the new mechanics: a sure-fire winner of a product design for the new office swivel chair, which has many segments and conquers one thing for sure: Champ is the model found in sophisticatedly furnished offices and heavily characterised by its low-key individuality. It does not tolerate any overloading. It needs space as an object and work facilitator. Champ is equipped with a new recognisable technical concept and offers an innovative sitting solution: New lightness and distinctiveness accentuate the high value of the item.

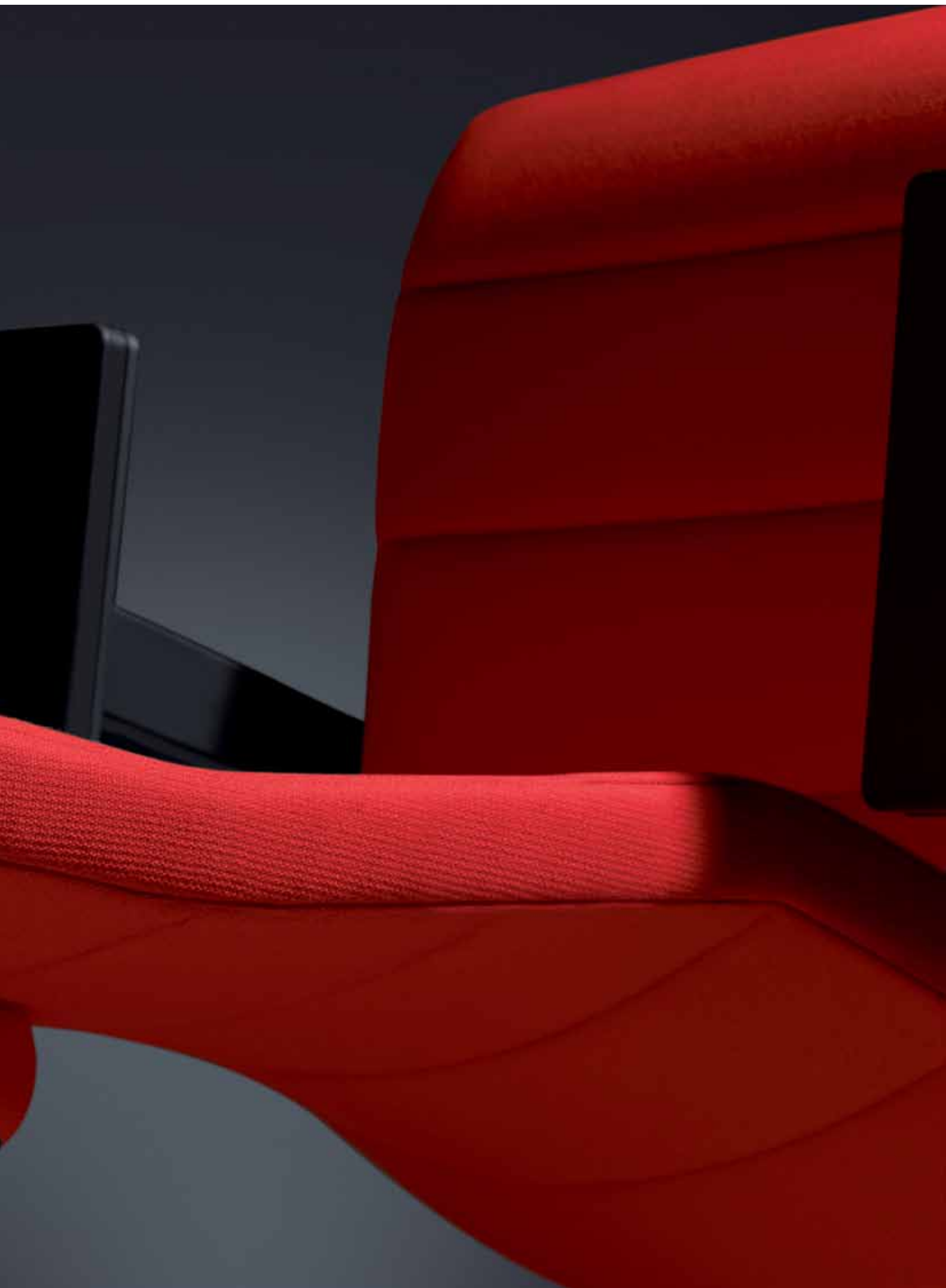


Optically, Champ is a slim, distinct, androgynous type. Its upholstery segments accentuate its design and identify the different backrest heights at the same time. Champ is a new product concept with new technology for an extraordinary

feeling when sitting – the “Body-float”. When you sit down, the seat floats down and moves backwards. This innovative connection of the backrest makes it possible to achieve an unequalled and delicate aesthetic and lightness of the

mechanical block. People with formal demands will look at office swivel chairs in a whole new light and be able to feel the uniqueness of Body-Float.





Champ swivel chairs are available in three different heights. The segments proportion the chair heights. The innovative Body-Float synchronous mechanism gives Champ a distinctive appearance. The revolutionary technology creates a feeling of gliding wave motion when you sit down and lean back.



1C52

Swivel chair,  
low backrest,  
Body-Float synchronous mechanism,  
weight adjustment,  
4D T-armrest optional



1C62

Swivel chair,  
medium backrest,  
Body-Float synchronous mechanism,  
weight adjustment,  
4D T-armrest optional





3C02

Swivel armchair, high backrest,  
Body-Float synchronous mechanism,  
weight adjustment, 4D T-armrest  
optional



3C02

Swivel armchair,  
high backrest  
with headrest,  
Body-Float synchronous  
mechanism,  
weight adjustment,  
loop armrests optional



3C22

Champ as a conference chair and cantilever chair, also with backrests in two heights, rounds off the collection's concept for integrated furnishings. A distinct detail of the cantilever chair: the armrests are connected in a continuous line. The upholstery in red is one of many colours and fabric / leather collections available for Champ.



5C60

Cantilever frame low  
with arm pad,  
stackable



5C70

Cantilever frame high  
with arm pad,  
stackable





The first swivel chair with front cantilever seating edge: distinctive design.



The front cantilever seating edge makes it possible to find a comfortable adjustment of the seat inclination. The innovative suspension on the rear seating area means the seating height no longer has to be manually adjusted, just like the height of the lumbar support when the incline is adjusted.



Body-Float synchronous mechanism

Body-Float synchronous mechanism:  
the body glides into a gentle rear  
flow movement. The new mechanism  
covers a wide weight spectrum from  
45–140 Kg.





The swinging and dynamic form of the ring-shaped armrest supports the elegant character of the series.



4D T-armrests, adjustable in height, width and depth, rotatable or 2D T-armrests, adjustable in width and height.





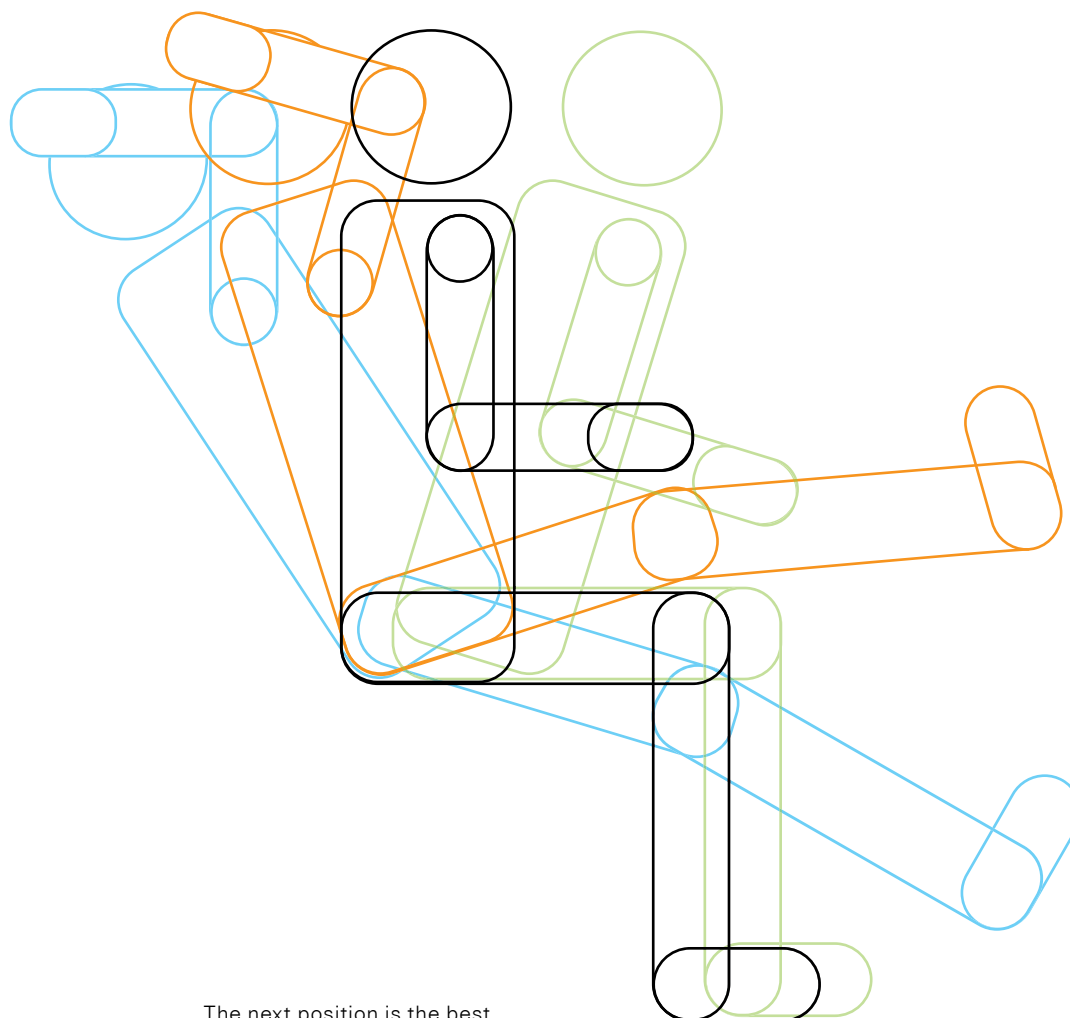
All control levers are positioned so that they can be intuitively reached. The handwheel provides fine adjustment of the individual Body-Float synchronous mechanism reset force.



Lumbar support with air-pressure technology.



The Astiv seat depth adjustment effectively extends the seating area and the seating area for the thighs. The base of the backrest remains unaffected.



#### From the seating specialists

Fact: from an anatomical point of view ergonomics means movement because movement is a critical part of office health. It is a law of nature that effective work processes are one of the most important sources of value-added in the company. Back problems are the greatest causes of absenteeism. A good chair will not heal your back but it is good preven-

tive medicine and eases the pain for those who already suffer. What does an Interstuhl chair do? The patient therapist offers support in each posture. It generates a feeling of well-being in all positions and brings measurable relief.

Naturally, the courage to follow our philosophy of dynamic sitting has meant a break with all the old rules: majestic, immaculate and bolt upright vs. the new

philosophy of doing it with gusto, reclining, lounging, looking out the window, concentrating.

"You can sit however you want. Just sit on the right chair." Each new product development with leading research institutes confirms this and it is substantiated by scientific input. The result: Interstuhl chairs accommodate every posture so ergonomically that maximum support is ensured.

- 1** Body-Float synchronous mechanism

Through the gentle floating movement of the seating area and backrest, the body is supported brilliantly in any position. The mechanism covers a wide weight spectrum of 45–140 Kg

---

- 2** Mechanical sprung column

This ensures that the spine, which is very sensitive to vertical jolts, is not subjected to excessive loads when sitting down, even at the lowest seat height.

---

- 3** Weight adjustment

The individually adjustable counter-pressure of the backrest permits correct sitting for both light and heavy users.

---

- 4** Back height adjustment

The support range for the lumbar spine can be ideally adjusted to the height of the user.

---

- 5** Adjustable seat inclination

Multiple adjustment of the seat in a forwards direction stops the pelvis from tilting back. This relieves the spine and avoids a poor posture.

---

- 6** Seat depth adjustment – Aktiv

Regulates the distance between the backrest and front edge of the seat, thus providing optimum support for the upper thighs; even for taller users. When adjusting the aktiv setting, the back remains in the same position.

---

- 7** Adjustable lumbar support

The horizontally adjustable lumbar support adapts to the individual curve of the lumbar spine; this reduces the muscle strain.

---

- 8** Headrest

The neck and shoulder muscles are relieved by the headrest when you lean back.

Office swivel chairs / Swivel armchairs



1C52

Swivel chair low,  
synchronous  
mechanism,  
weight adjustment,  
armrests optional



1C62

Swivel chair medium,  
synchronous  
mechanism,  
weight adjustment,  
armrests optional

Back height in cm (approx.)	48 - 54	48 - 54
Plastic colour black	•	•
Black polyamide base	•	•
Aluminium base black / brilliant silver / polished	◦ / ◦ / ◦	◦ / ◦ / ◦
Tubular frame steel black / brilliant silver / chromed	-	-
Body-Float synchronous mechanism	•	•
Weight adjustment	•	•
Mechanical sprung column	•	•
Back height adjustment	•	•
Seat depth adjustment - Astiv	◦	◦
Adjustable seat inclination	◦	◦
Adjustable lumbar support (Air-Pressure)	◦	◦
Headrest	-	-
Loop armrests / loop armrests with leather cover	◦ / ◦	◦ / ◦
2D T-armrests, adjustable in height and width	◦	◦
4D T-armrests, adjustable in height, width and depth, rotatable	◦	◦
Arm pad / arm pad with leather cover	-	-
Stackable	-	-
Double castors hard / soft	• / ◦	• / ◦
Glides hard / soft	◦ / ◦	◦ / ◦
Felt glides	-	-

## Visitor / conference chairs



3C02

Swivel armchair high,  
synchronous  
mechanism,  
weight adjustment,  
armrests optional



3C22

Swivel armchair high  
with headrest,  
synchronous  
mechanism,  
weight adjustment,  
armrests optional



5C60 (stackable)

Cantilever frame  
medium, arm pad,  
(or Fig. 5C65)



5C70 (stackable)

Cantilever frame  
high, arm pads,  
(or Fig. 5C75)

60 - 66

60 - 66

51

51

•

•

•

•

•

•

-

-

○ / ○ / ○

○ / ○ / ○

-

-

-

-

• / ○ / ○

• / ○ / ○

•

•

-

-

•

•

-

-

•

•

-

-

•

•

-

-

○

○

-

-

○

○

-

-

○

○

-

-

-

•

-

-

○ / ○

○ / ○

-

-

○

○

-

-

○

○

-

-

-

-

• / ○

• / ○

-

-

5C60

5C70

• / ○

• / ○

-

-

○ / ○

○ / ○

-

-

-

-

○

○

Especially in the group or opposite one another, you can see that the constructing segments, which proportion the chair heights, have the most subtle detail.



5C60



3C02



Produkt-Design: Andreas Krob,  
Joachim Brüske © interstuhl.

Andreas Krob is an industrial designer. B4K was founded with his wife Uta Krob in 2001. The office stands for sensitive design of demanding and innovative tasks from the design and architecture fields. The furniture speaks an individual language of form and each single piece is unique in its character. With Champ, an office swivel chair was created, which brings specific, technical innovation together with classic, long-lasting design into sophisticated rooms of communication.

The product design for Champ was realised in cooperation with Joachim Brüske. Joachim Brüske took charge of the technical management in developing the new mechanism.



reddot design award  
2009



3 year full warranty,  
5 year long-term  
warranty



Quality produced  
for the environ-  
ment



Ergonomics  
approved



Tested for  
contaminants



Tested  
safety



Goldenes M



Quality  
Office



Bifma e3  
level platin



The  
Blue Angel

Interstuhl  
Büromöbel GmbH & Co. KG  
Brühlstraße 21  
72469 Meßstetten-Tieringen, Germany  
Phone +49-74 36-871-0  
Fax +49-74 36-871-110  
info@interstuhl.de  
www.interstuhl.de

Interstuhl in France  
Téléphone 0800 91 73 49  
Fax +49 7436 871 88 123  
france@interstuhl.com  
www.interstuhl.fr

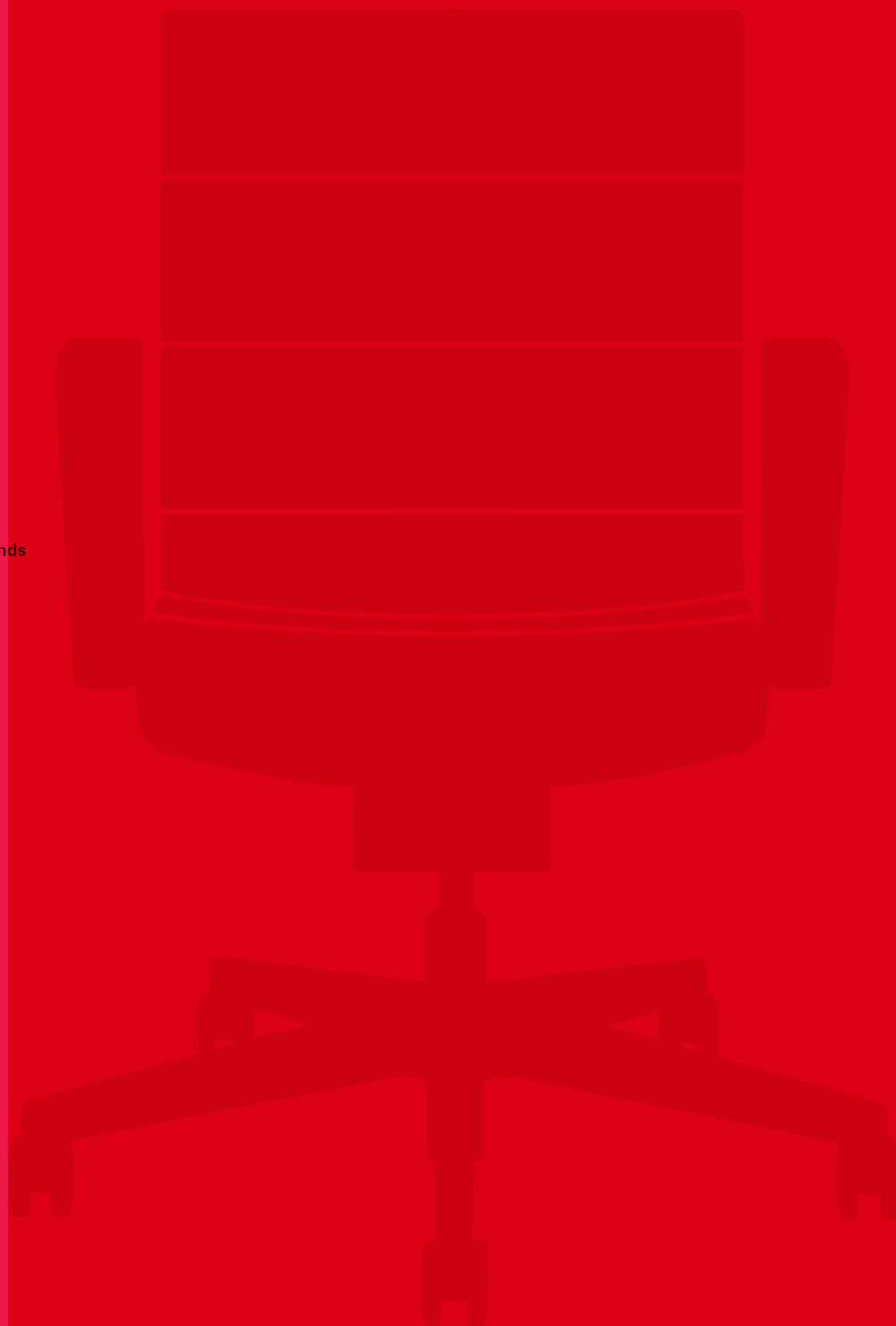
Interstuhl Limited  
17 Brewhouse Yard  
London  
EC1V 4LA, GB  
Phone +44 20 7250 1850  
Fax +44 20 7250 1890  
assist@interstuhl.com  
www.interstuhl.com

Interstuhl S.L.U.  
c/José del Hierro, 67  
28027 Madrid, Spain  
Phone +34 91 406 18 41  
Fax +34 91 407 31 27  
info@interstuhl.es  
www.interstuhl.es

Interstuhl in Austria  
Pfarrgasse 50  
1230 Wien, Austria  
Phone +43 1 61 64 113  
Fax +43 1 61 64 020  
oesterreich@interstuhl.com  
www.interstuhl.at

Interstuhl in  
Netherlands and Belgium  
Velto B.V.  
Energieweg 21  
2382 NB Zoeterwoude, Netherlands  
Phone +31 71 58 12 400  
Fax +31 71 58 96 907  
info@interstuhl.nl  
www.interstuhl.nl

Interstuhl in Scandinavia  
Pakhus 48  
Sundkaj 11, Frihavnen  
2100 København Ø, Denmark  
Phone +45 32 52 97 40  
Fax +45 32 52 97 42  
scandinavia@interstuhl.com  
www.interstuhl.com



Please find our international partners on [www.interstuhl.com](http://www.interstuhl.com)

Subject to technical changes. Colour deviations possible due to printing methods. 06/13 TN: 1WCHAMP-E

